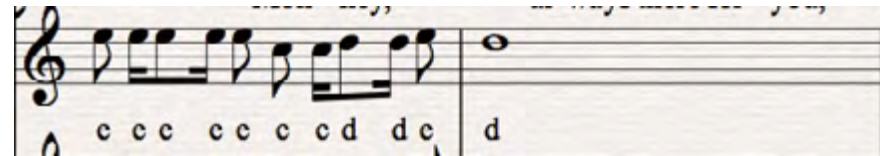


# Monkey's NHS Song

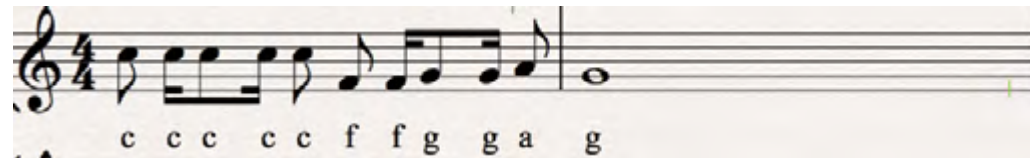
## Chorus Parts

*Due to the complex rhythms used in the song, it is strongly recommended that children play along with the CD as they learn the parts. The audio file **IN C** should be used for this (note that the part 2 rhythm is particularly challenging!) Parts are suitable for any instrument that plays in C such as tuned percussion, recorder, flute, piano, violin, trombone, cello etc.*

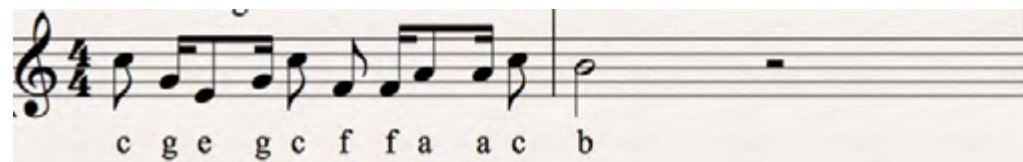
Part 1a



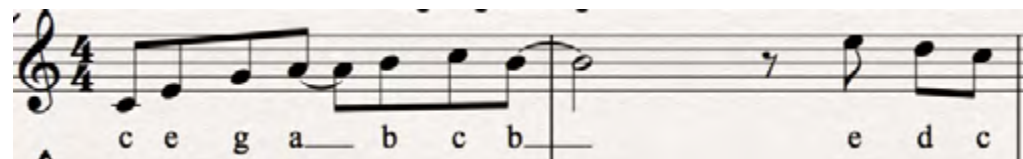
Part 1



Part 2



Part 3



Bass Line

